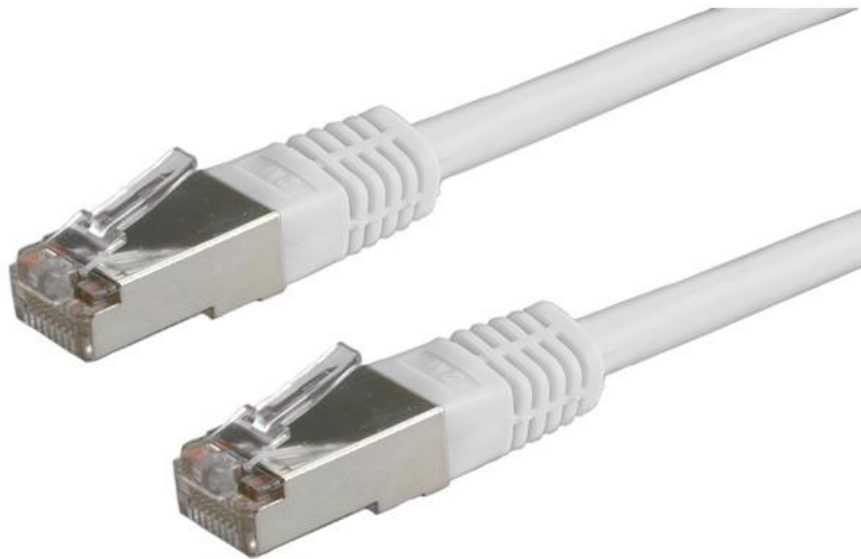




Datenblatt - Fiche technique - Data sheet

21.15.0307



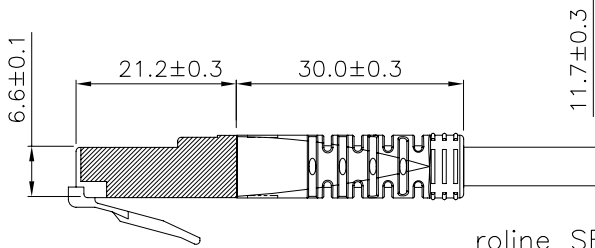
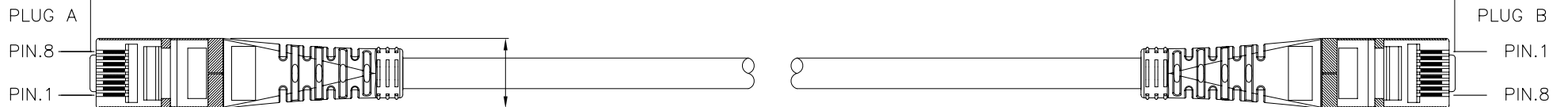
ROLINE S/FTP-Patchkabel konf. Kategorie 5e, grau, 7,0 m

Cordon ROLINE Cat.5e S/FTP AWG26, gris, 7,0 m

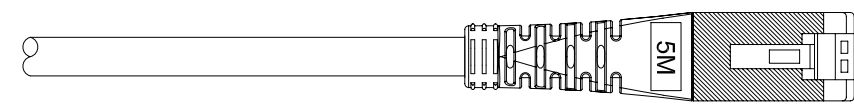
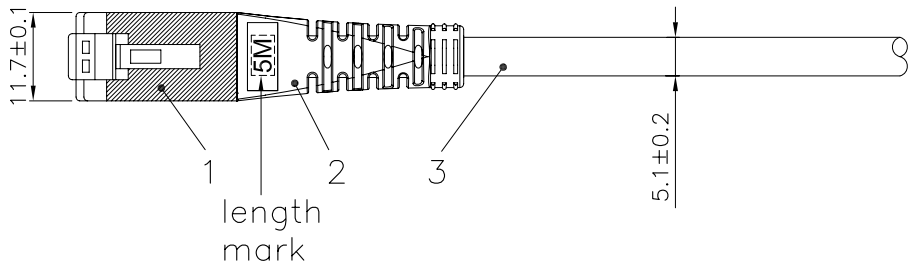
ROLINE S/FTP Patch Cord Cat.5e, grey, 7.0 m

1 2 3 4 5 6

Total length (optional)



roline SFTP PATCH CABLE 26AWG 4PR ISO/IEC11801 & EN50288
CAT.5E XXXXXXXX-X



Remark : SCADAXX007X XXX X 10 XXX
(1) (2) (3) (4) (5)

- (1) XX : Jacket Color
01=Black(RAL9011), 02=Gray(RAL7035), 03=Red(RAL3031)
05=White(RAL9010), 06=Yellow(RAL1021), 07=Blue(RAL5015)
08=Green(RAL6029), 09=Orange(RAL2003), 10=Purple(RAL4005)
11=Pink(RAL4003)
- (2) X : Wiring
1=T568A, 2=T568B, 3=T568A & T568B combination
- (3) XXX : Length
- (4) Length Unit : 1=cm, 2=meter, 3=feet.
(3)(4) : 0501=0.5meter(50cm), 0012=1meter, 0102=10meter
0033=3feet, 0103=10feet
- (5) XXX :Flow NO.

Specification :

Material :

1. RJ45 Plug : (JE P/N : PRS8850-F/0.9)
 - 1-1. Housing : Polycarbonate, UL 94V-2, Transparent color.
 - 1-2. Contact material : Phosphor Bronze with 50-60 micro-inch Nickel plated.
 - 1-3. Contact finished : Min. 50 micro-inch Gold plated on surface contact area.
 - 1-4. Shield : Bronze with Nickel plated.
2. Molding : PVC.
3. Cable :
 - 3-1. Jacket : PVC.
 - 3-2. Conductor : 26 AWG stranded copper.
 - 3-3. Isolation : PE.
 - 3-4. Shield : Aluminum Foil, Tin Copper Braid.
4. Cable structure : SF/UTP, 4 twisted pair.

| | | | | |
|---|----------|--|--------|--------------------------|
| GENERAL TOLERANCE OF DIMENSIONS X.XXX ±0.005 X.XX ±0.05 X.X ±0.1 | DRAWING | 06.OCT.2010 | Connie | rotronic |
| | CHECK | 06.OCT.2010 | Maer | |
| | APPROVAL | 06.OCT.2010 | Yty | |
| | DATE | | NAME | ITEM NO.: 21.15.0305(5M) |
| SCALE | 1/1 (A4) | UNIT | mm | DES.: ROL-SST-C5E-CABLE |
| | | DRAWING NO. 21.15.0305(5M)SCADA020072005210001 | | |
| | | DRAWING CLASSIFICATION | E | |

1 2 3 4 5 6
0 10cm